



9th International Conference on Condition Monitoring and Diagnosis 2022 (CMD2022)

2022年11月13日(日)~11月18日(金)

ハイブリッド開催(北九州国際会議場+WEB)

華晋グローバル株式会社



日本製

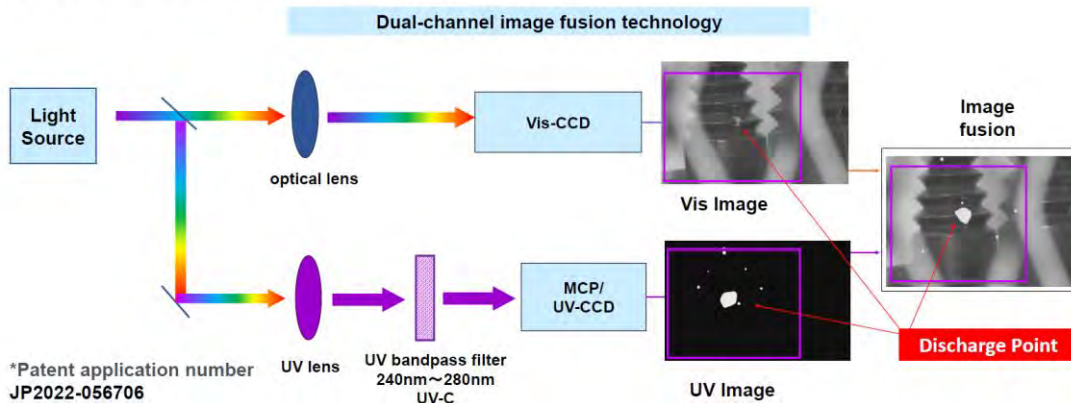
Corona Discharge Detection UV Camera



UV camera can detect corona discharge early

- 1: Accelerating the aging of electrical insulation.
- 2: Generating electromagnetic interference.
- 3: Reducing the efficiency of power transmission.
- 4: Causing generator set failure.
- 5: Causing tripping, fire, explosion and other serious accidents.

UV Camera [®]MetaUVI-100 Structure



Features

- Compact, Light weight, Easy to carry
- Precise image processing algorithm
- Wide-angle and telephoto dual lenses
- Ergonomic design and one-button operation
- 240~280nm UV filter, can be used in sunny days
- High sensitivity UV detector, no attenuation

Application



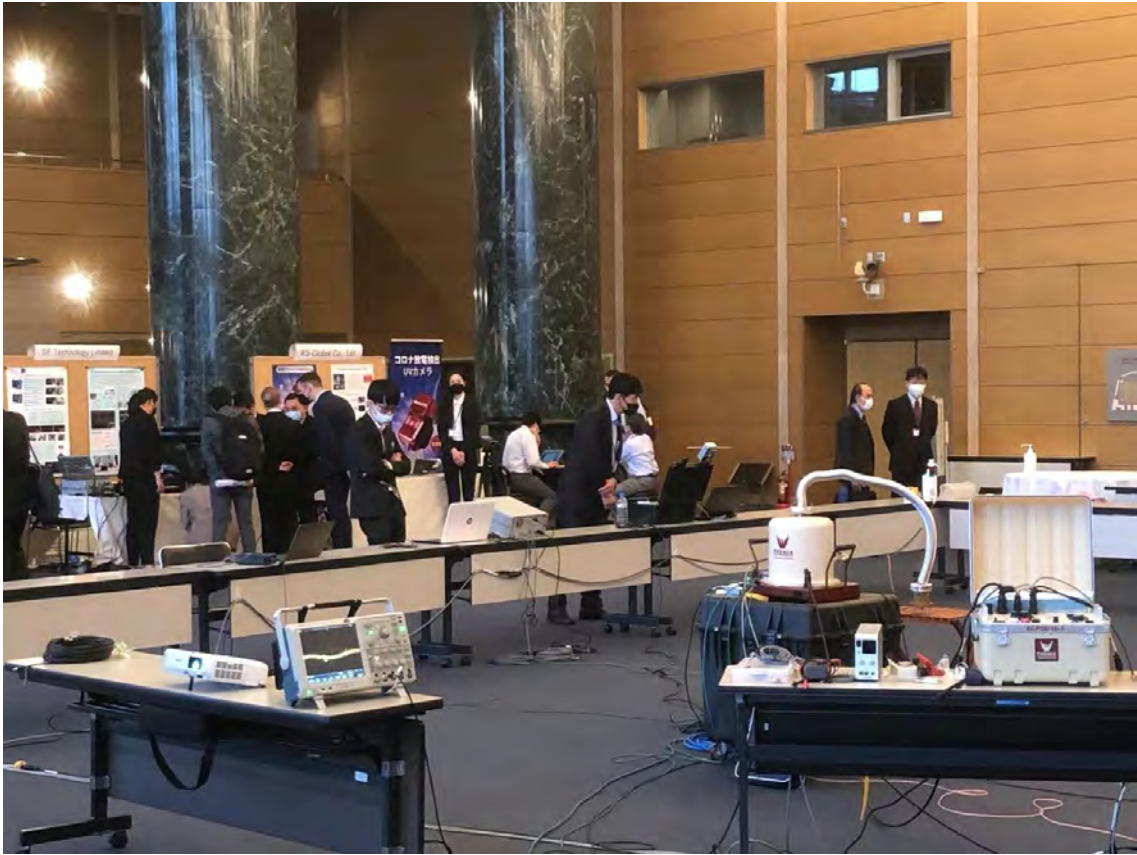
Technical Specifications

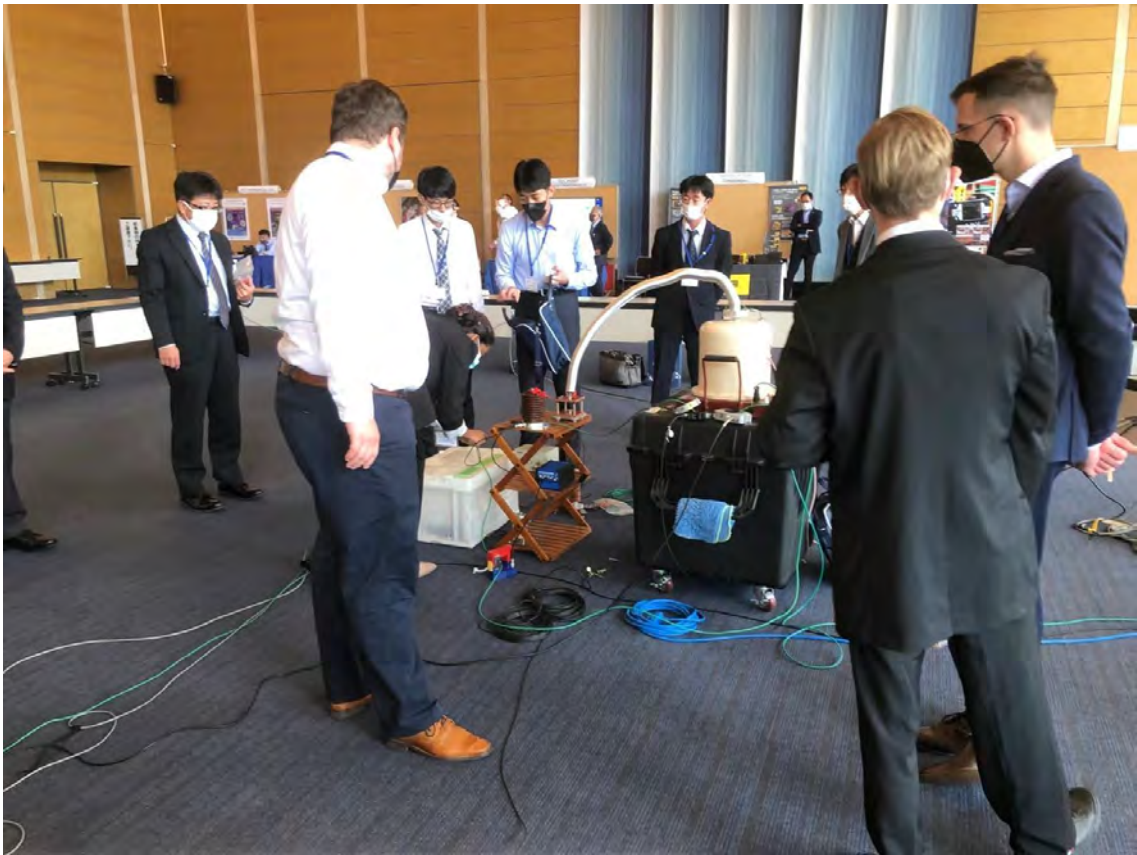
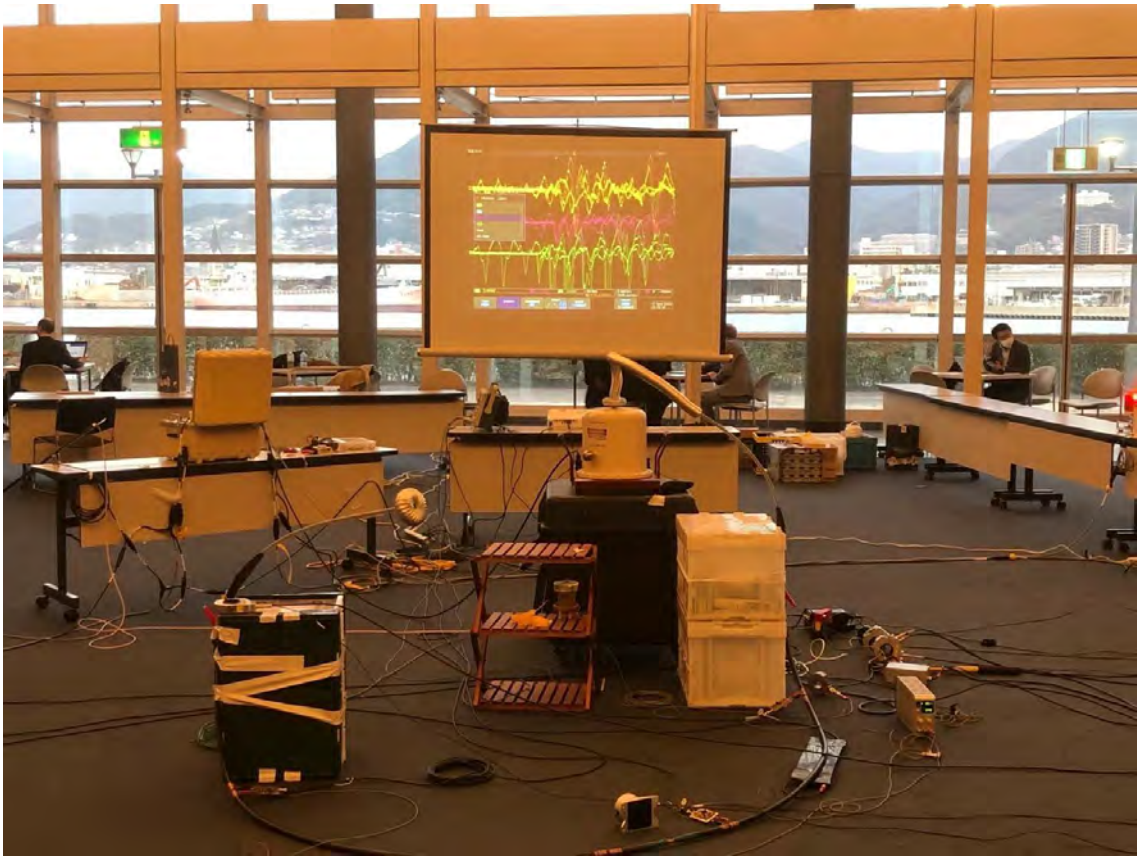
Min. UV Sensitivity	2.0 × 10 ⁻¹⁸ watt/cm ²
Min. Discharge Sensitivity	1pC@10m
UV/Vis Overlay Accuracy	≤ 1 mrad
F.O.V	13.3° × 10.6° & 5° × 3.75°
Focus & Focus Range	Auto, 1.5m ~∞

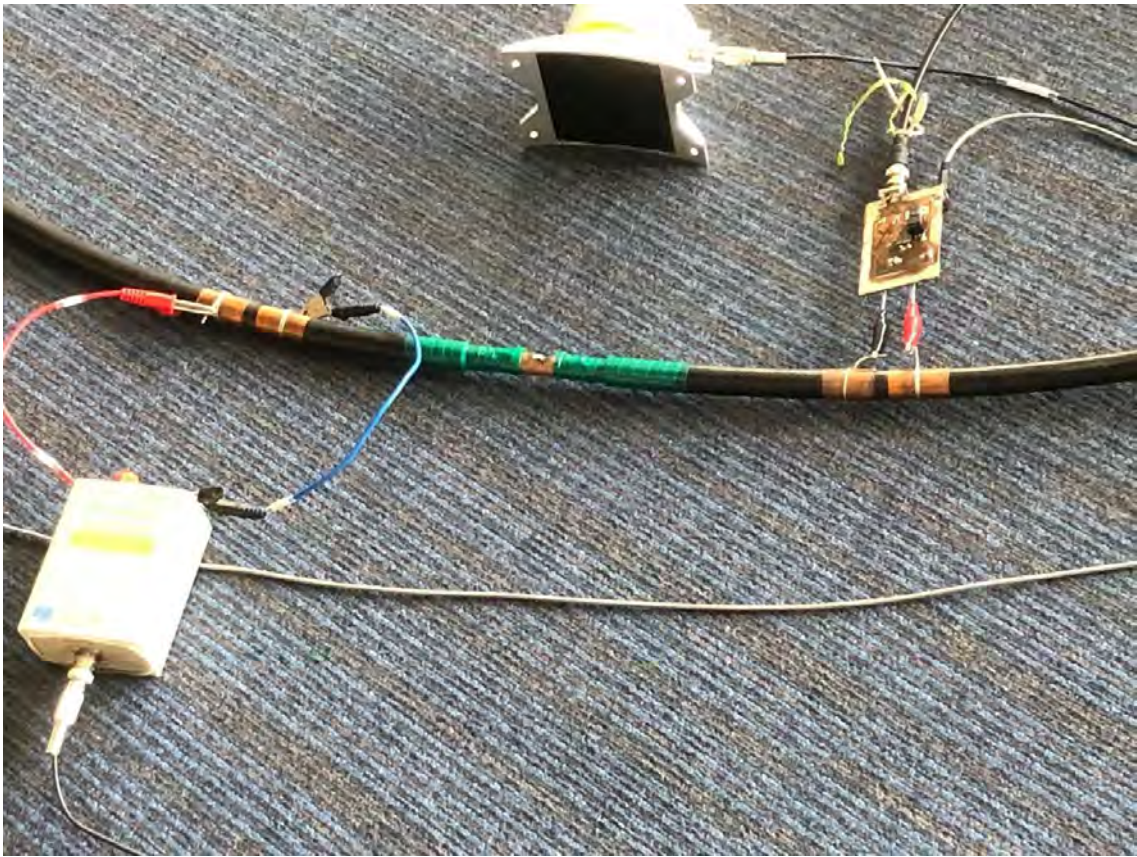
KS-Global Co., Ltd.

Tel / Fax : 03-6686-7815
Mail : info@ks-global.co.jp

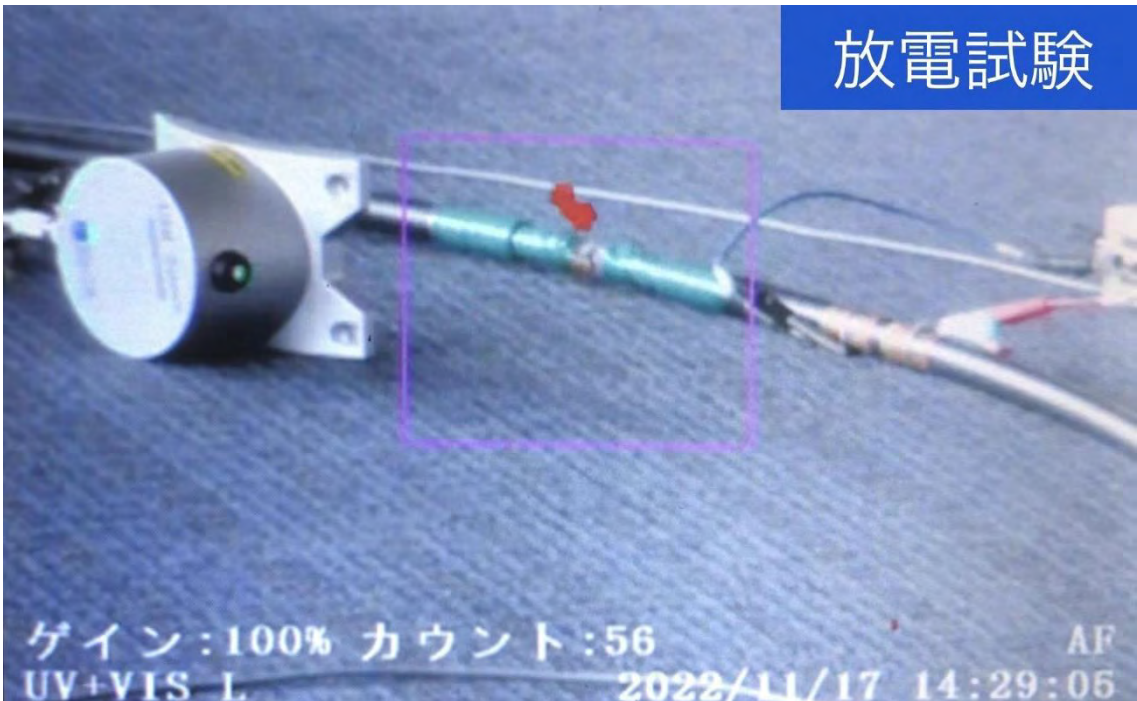








放電試験



ゲイン:100% カウント:56 AF
UV+VIS L 2022/11/17 14:29:06

KS-Global Co., Ltd.

華晋グローバル株式会社



MetaUVI

日本製

Corona Discharge Detection UV Camera

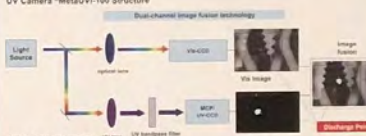
Corona Discharge
Negative chain
Material Failure

UV camera can detect corona discharge early

1. Accelerating the aging of electrical insulation
2. Generating electromagnetic interference
3. Reducing the efficiency of power transmission
4. Causing generator set failure
5. Causing tripping, fire, explosion and other serious accidents

UV Camera "MetaUVI-100 Structure"

Dual-channel image sensor technology



Light Source → Optical lens → VSI-CCD → Image Sensor → Discharge Point

UV lens → WPI sensor → UV image

※Main application number #0122-034796

Features

- Compact, light weight, easy to carry
- Precise image processing capability
- Broad-angle and infrared heat sensor
- Equipped delay and lock-in operation
- 300-800nm UV filter can be used to detect corona
- High sensitivity UV detection via observation

Application

Substation, Power plant, Distribution network, etc.

Technical Specifications

Min. UV Sensitivity	2.0 fW/cm ² (8.0 μW/cm ²)
Min. Detection Sensibility	100 fW/cm ²
UV/Vis. Double Accuracy	1.0 μm
Pixel	12.7 × 10.4 × 3.8 × 3.37μm
Power & Power Range	Acad. 1.0W max

KS-Global Co., Ltd.
Tel: +81-54-688-7613
Web: www.ks-global.co.jp

